

LockAlertTM

Vehicle 'Unlocked' Warning Device

INSTALLATION INSTRUCTIONS & USER GUIDE



Trigend
innovative excellence.

PLEASE NOTE THIS DEVICE SHOULD BE INSTALLED BY A PROFESSIONAL AUTOMOTIVE ELECTRICIAN OR AUTOMOTIVE SECURITY INSTALLER

IN THE BOX

☀️ 1 x LockAlert Device With Cabling

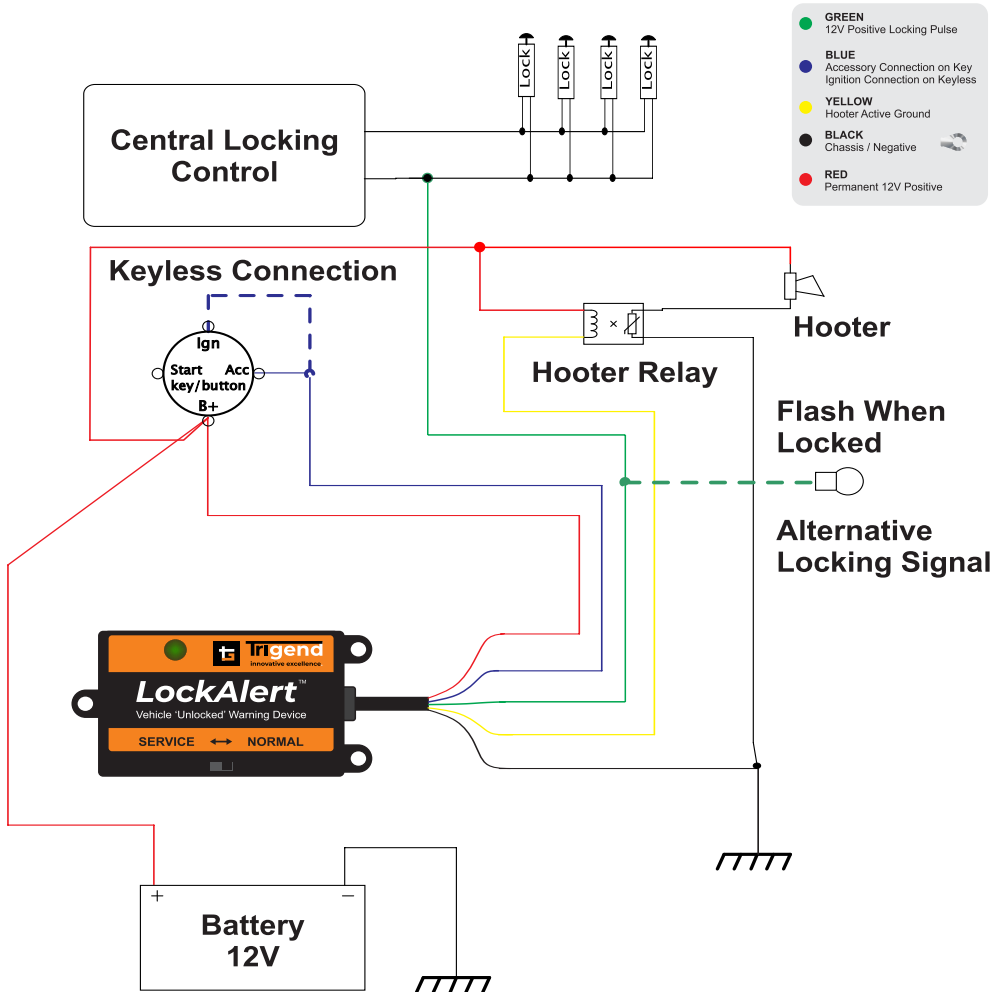
☀️ 4 x Fused Power Tap-off Connectors

☀️ 4 x Mounting Screws

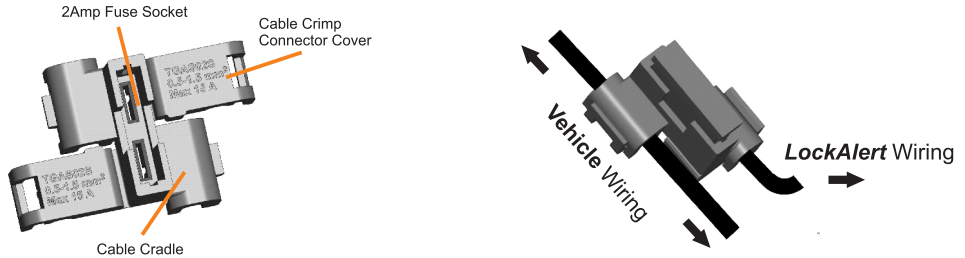
☀️ 4 x 2A Fuses

☀️ 1 x Instruction Leaflet

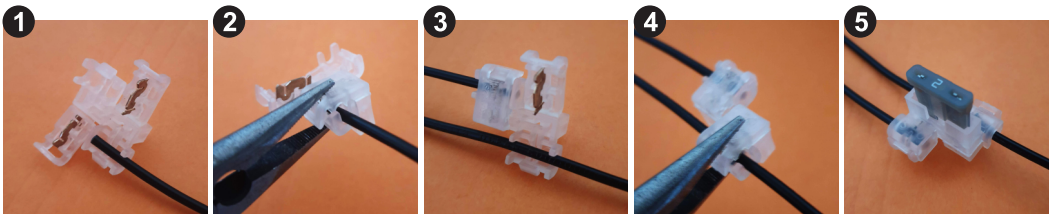
DEVICE WIRING



FUSED POWER TAP-OFF CONNECTOR INSTALLATION



No Stripping of wires necessary. Simply place the corresponding signal wire from the vehicle with the corresponding device wire inside the adjacent cable cradle and crimp the cable connector covers as illustrated in steps 2 and 4 below to close. Insert the 2A fuse into the fuse socket to complete the connection.



STEP 1

- Place the *LockAlert* wire into the cable cradle with the end of the wire right up against the plastic stop point
- You do NOT need to strip the wire

STEP 2

- Close the cable cradle cover while holding the wire in place
- Use a plier and crimp the cover until a clicking sound is heard.
- The Cover will then be closed

STEP 3

- Place the corresponding signal wire from the vehicle wiring into the adjacent side of the cable cradle
- You do NOT need to strip the wire

STEP 4

- Close the cable cradle cover while holding the wire in place
- Use a plier and crimp the cover until a clicking sound is heard.
- The Cover will then be closed

STEP 5

- Insert the provided 2A fuse into the fuse socket located on the top of the cable cradle
- The connection will now be complete.

Repeat this process with all remaining wires

By using 2A fuses on each connecting wire, the vehicle's internal fuse system will be protected. Should a wiring fault occur for any reason, the fuses that are used as part of this installation will disable the *LockAlert* device before any damage could be done to the motor vehicle's electronic systems.

OPERATING INSTRUCTION:

- When the vehicle's ignition key or keyless ignition device is turned off, a 24 second timer is activated.
- When 24 seconds have elapsed the car hooter will sound with 6 short beeps in quick succession alerting the driver that locking has not taken place.
- A second alert will sound 17 seconds later if there is no locking signal. Thereafter the unit will shut down into a dormant state after 10 seconds drawing no power from the vehicle.
- If a locking signal is received from the central locking system within the three timing periods, a single beep will be issued indicating locking took place (this function can be disabled if not required), the unit will then shut down.

SERVICE FUNCTION

This **LockAlert** device comes standard with a service function that will allow the device to be completely disabled. This will typically be used when the vehicle is being serviced and as part of the service routine the vehicle's ignition is required to be switched on and off multiple times. This will allow servicing to take place without activating the device (and the hooter) each time the vehicle's ignition is turned on and off.

To Activate and Deactivate the Service Function:

- **SERVICE FUNCTION:**
Set the switch located on the top of the device to "SERVICE" by ensuring the switch is positioned on the left of the switch selector.
- **NORMAL FUNCTION:**
Set the switch located on the top of the device to "NORMAL" by ensuring the switch is positioned on the right of the switch selector.

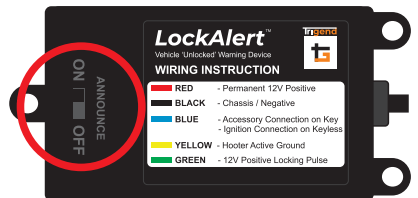


IT IS RECOMMENDED THAT THE SERVICE FUNCTION REMAINS OFF AND THAT THE SWITCH IS SET PERMANENTLY TO "NORMAL".

THIS WILL ENSURE THAT THE DEVICE WILL BE ACTIVATED AND WILL PERFORM AS SPECIFIED

ANNOUNCE FUNCTION

This **LockAlert** device comes standard with an announce function (lock confirmation single hoot). Should the user not require the announce function, set the switch located on the bottom of the device to "OFF" at the time of installation.



IT IS RECOMMENDED THAT THE ANNOUNCE FUNCTION REMAINS ON.

THIS WILL ALERT THE DRIVER EACH TIME LOCKING HAS SUCCESSFULLY TAKEN PLACE (WITHIN THE 3 TIMING PERIODS).

This **LockAlert** device is intended as a warning device when vehicles do not receive lock signals, and is not an auto alarm or tracking device

DESIGNED AND MADE IN SOUTH AFRICA. PATENT PENDING

WARRANTY & DISCLAIMER

This product carries a warranty by TRIGEND (PTY) LTD
For one year from date of purchase against manufacturing defaults and to perform as specified.

*** Images shown in this instruction insert may differ from actual product ***

RETAIN YOUR RECEIPT AS PROOF OF PURCHASE.

TRIGEND (PTY) LTD will not be held responsible for any claims arising from theft, breakages or residual damage caused by negligence or incorrect use of this product.
TRIGEND (PTY) LTD will furthermore not be held responsible for any damages and or claims arising from the incorrect installation of this device, and retains the right to inspection of the device and the installation should it so choose.